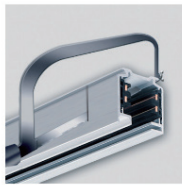
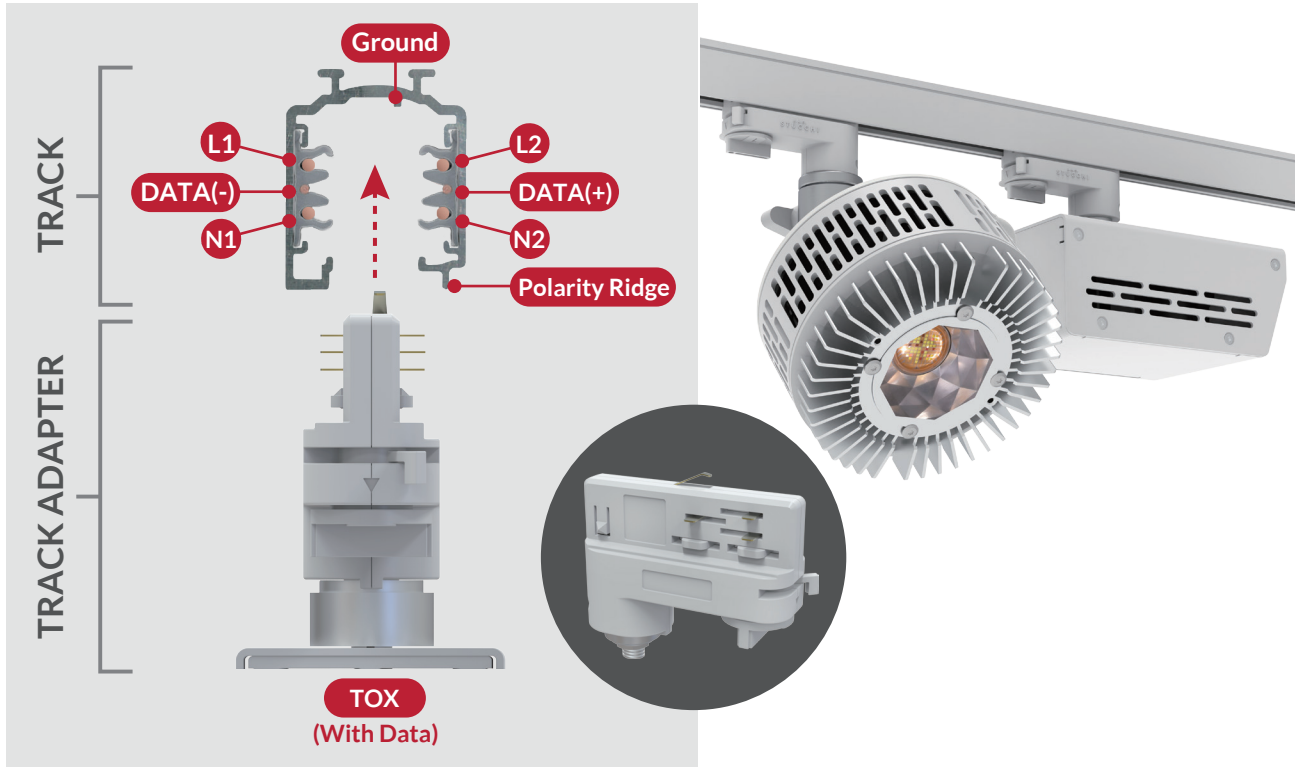


# Cielux O-Type Track

## 2 Circuit Data Track - TOX Configuration

### TRACK CROSS SECTION



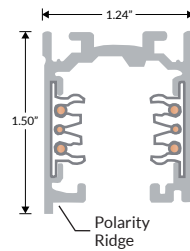
#### Custom Lengths

Track segments can be cut on location



#### Mounting Points

Pre-drilled slots for easy mounting



#### DMX Ready

Supports up to 30 DMX devices

### TRACK SPECIFICATION

Track Type	Surface Mounted Track (commercial grade)
Conductors	7 (2 Data, 2 Live, 2 Neutral, 1 Ground)
Input Voltage	120V
Circuits	2 (20A max per circuit, 40A max per track)
Material	Aluminum / PVC / Polycarbonate / Copper conductors
Number of DMX Fixtures	30 Max
Color Options	Black / White
Segment Length Options	4ft / 8ft
Track Mounting Points	0.47" x 0.16" (11mm x 4mm) Slot Per 1.64' (500mm)

### TRACK SEGMENTS

#### 120V, 2 Circuits with Data

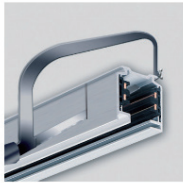
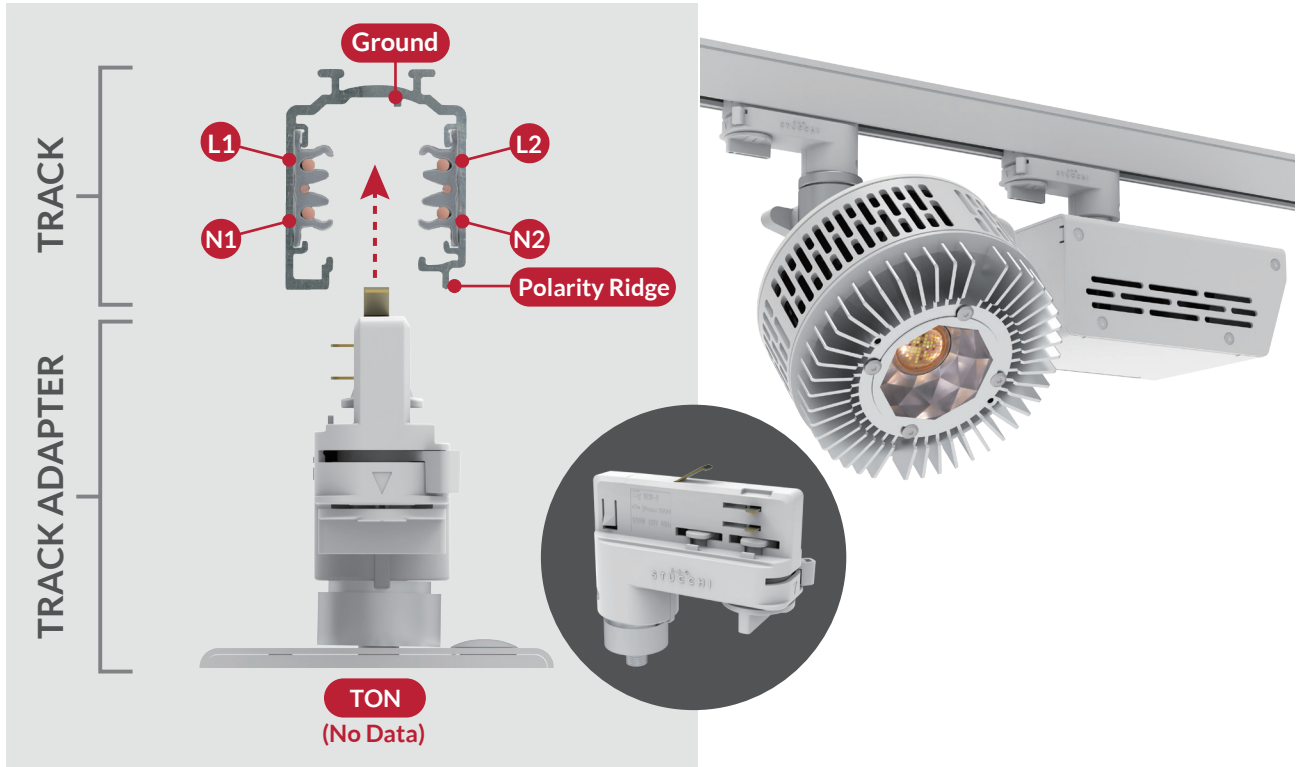
**4FT** BLACK : 9000-UL4/B-ST2-120  
WHITE : 9000-UL4/W-ST2-120

**8FT** BLACK : 9000-UL8/B-ST2-120  
WHITE : 9000-UL8/W-ST2-120

# Cielux O-Type Track

## 2 Circuit Track - TON Configuration

### TRACK CROSS SECTION



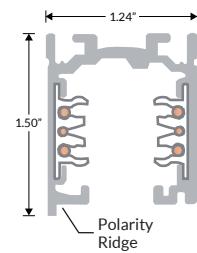
#### Custom Lengths

Track segments can be cut on location



#### Mounting Points

Pre-drilled slots for easy mounting



### TRACK SPECIFICATION

Track Type	Surface Mounted Track (commercial grade)
Conductors	7 (2 Live, 2 Neutral, 1 Ground, 2 Data (unused))
Input Voltage	120V
Circuits	2 (20A max per circuit, 40A max per track)
Material	Aluminum / PVC / Polycarbonate / Copper conductors
Number of DMX Fixtures	30 Max
Color Options	Black / White
Segment Length Options	4ft / 8ft
Track Mounting Points	0.47" x 0.16" (11mm x 4mm) Slot Per 1.64' (500mm)

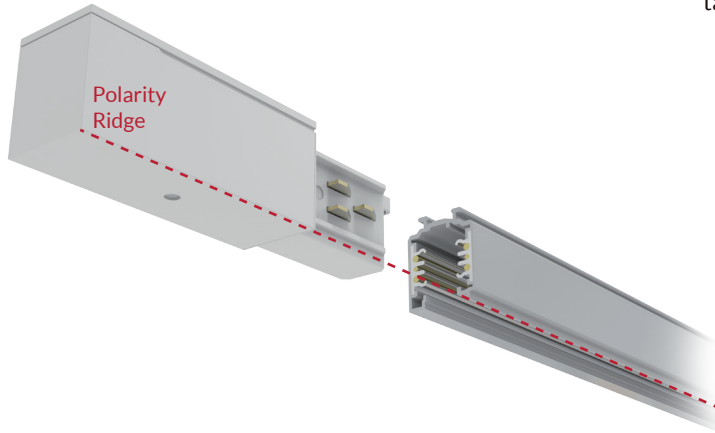
### TRACK SEGMENTS

#### 120V, 2 Circuits

**4FT** BLACK : 9000-UL4/B-ST2-120  
WHITE : 9000-UL4/W-ST2-120

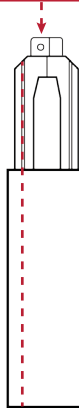
**8FT** BLACK : 9000-UL8/B-ST2-120  
WHITE : 9000-UL8/W-ST2-120

**POLARITY RIDGE**



There a mechanical key on the track to guarantee the proper connection of multiple pieces of track. This key is present on all end-feeds and connecting components (see screw below-pictured). Care must be taken when ordering to select the correct components.

Screw location indicates polarity side



Polarity ridge - floor view

**COMPONENTS**



**End Feed**  
Polarity Left

BLACK : 9002/B-2C    WHITE : 9002/W-2C



**End Feed**  
Polarity Right

BLACK : 9001/B-2C    WHITE : 9001/W-2C



**Straight Coupler with Feed**  
Power Feed

BLACK : 9010/B-2C    WHITE : 9010/W-2C

Can be oriented both sides



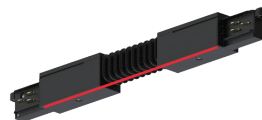
**L-Coupler**  
Polarity Inside

BLACK : 9011/B-2C    WHITE : 9011/W-2C



**L-Coupler**  
Polarity Outside

BLACK : 9012/B-2C    WHITE : 9012/W-2C



**Flex Coupler**  
Polarity and Power Feed

BLACK : 9018/B-2C    WHITE : 9018/W-2C

30° - 330° mobility range  
Can be oriented both sides



**End Cap**

BLACK : 9004/B    WHITE : 9004/W

Can be oriented both sides